

REV. 84-130
AWOC #0001
5/2/21/D

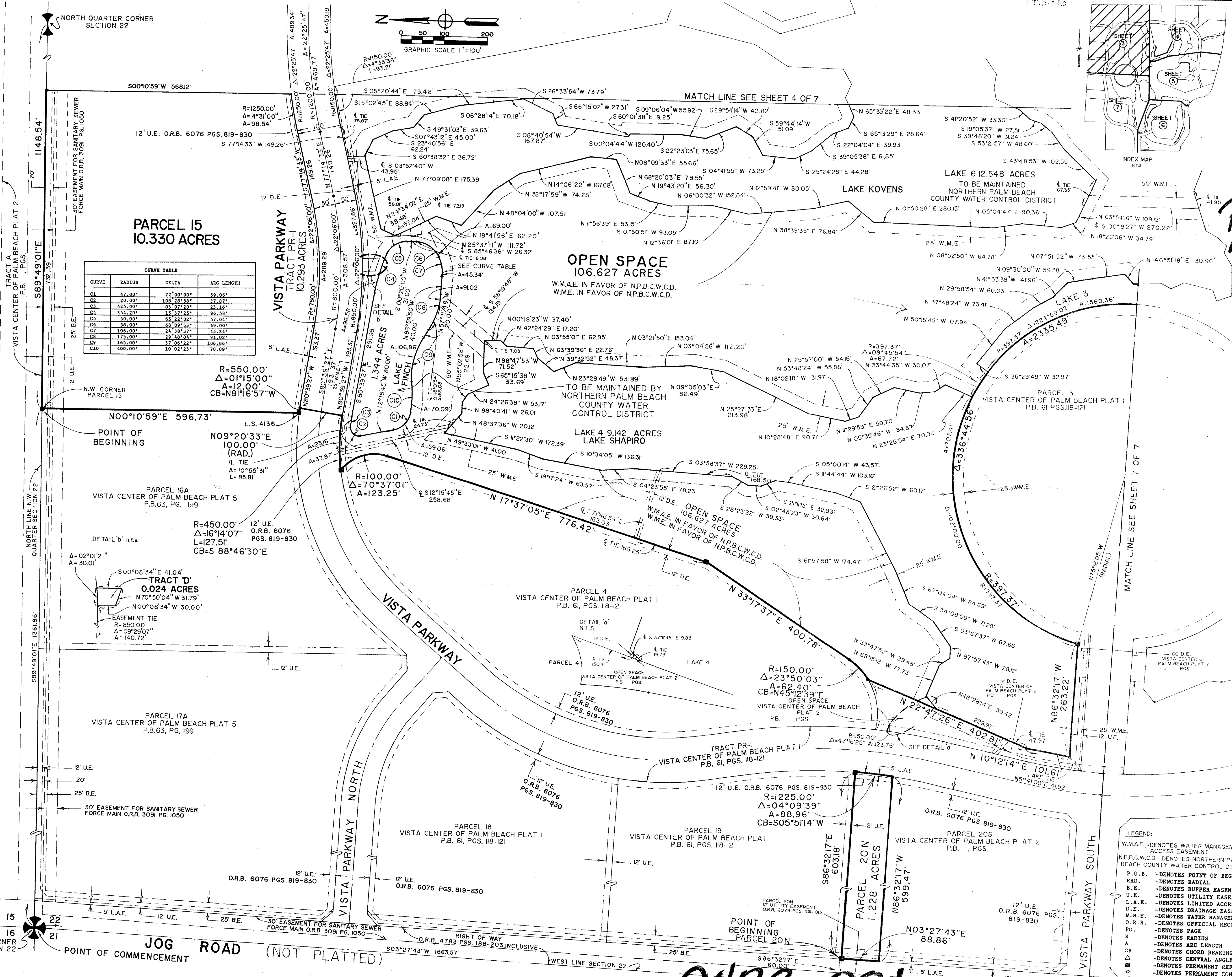
VISTA CENTER OF PALM BEACH PLAT 3
A PLANNED INDUSTRIAL PARK DEVELOPMENT
IN SECTION 22 TOWNSHIP 43 SOUTH, RANGE 42 EAST,
PALM BEACH COUNTY, FLORIDA

68/130

- LEGEND:
- W.M.A.E. - DENOTES WATER MANAGEMENT ACCESS EASEMENT
 - N.P.B.C.W.C.D. - DENOTES NORTHERN PALM BEACH COUNTY WATER CONTROL DISTRICT
 - P.O.B. - DENOTES POINT OF BEGINNING
 - RAD. - DENOTES RADIAL
 - B.E. - DENOTES BUFFER EASEMENT
 - U.E. - DENOTES UTILITY EASEMENT
 - L.A.E. - DENOTES LIMITED ACCESS EASEMENT
 - D.E. - DENOTES DRAINAGE EASEMENT
 - W.H.E. - DENOTES WATER MANAGEMENT EASEMENT
 - O.R.B. - DENOTES OFFICIAL RECORD BOOK
 - PG. - DENOTES PAGE
 - R - DENOTES RADII
 - A - DENOTES ARC LENGTH
 - CB - DENOTES CHORD BEARING
 - Δ - DENOTES CENTRAL ANGLE
 - ◆ - DENOTES PERMANENT REFERENCE MONUMENT LB3920
 - - DENOTES PERMANENT CONTROL POINT

CURVE TABLE

CURVE	RADIUS	DELTA	ARC LENGTH
C1	47.00'	72°00'00"	59.06'
C2	20.00'	108°28'58"	37.87'
C3	425.00'	03°07'20"	23.16'
C4	354.20'	15°37'25"	96.59'
C5	50.00'	65°22'02"	57.04'
C6	58.00'	68°09'33"	69.00'
C7	106.00'	24°30'37"	45.34'
C8	175.00'	32°48'04"	91.92'
C9	165.00'	37°06'22"	106.86'
C10	400.00'	10°02'23"	70.09'



POINT OF BEGINNING

R=550.00'
Δ=01°15'00"
A=12.00'
CB=N81°16'57"W

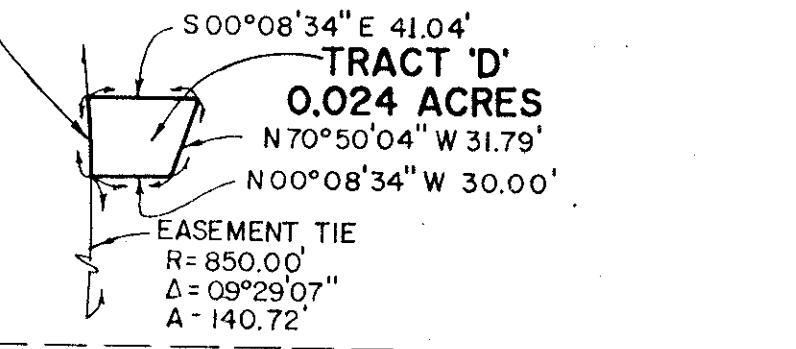
N00°10'59"E 596.73'

L.S. 4136

N09°20'33"E 100.00' (RAD.)

Δ=10°55'31"
L=85.81'

R=450.00'
Δ=16°14'07"
L=127.51'
CB=S 88°46'30"E



PARCEL 17A
VISTA CENTER OF PALM BEACH PLAT 5
P.B.63, PG. 199

30' EASEMENT FOR SANITARY SEWER FORCE MAIN O.R.B. 3091 PG. 1050

PARCEL 18
VISTA CENTER OF PALM BEACH PLAT 1
P.B. 61, PGS. 118-121

PARCEL 19
VISTA CENTER OF PALM BEACH PLAT 1
P.B. 61, PGS. 118-121

PARCEL 20
VISTA CENTER OF PALM BEACH PLAT 2
P.B. , PGS. ,

PARCEL 20N
1.228 ACRES

R=1225.00'
Δ=04°09'39"
A=88.96'
CB=S05°51'14"W

POINT OF BEGINNING PARCEL 20N

N03°27'43"E 88.86'

RIGHT OF WAY O.R.B. 4783 PGS. 188-203, INCLUSIVE

WEST LINE SECTION 22

503°27'43" W 1863.57'

586°32'17" E 60.00'

5' L.A.E.

12' U.E.

25' B.E.

30' EASEMENT FOR SANITARY SEWER FORCE MAIN O.R.B. 3091 PG. 1050

12' U.E.

12' U.E.

12' U.E.

12' U.E.

12' U.E.

12' U.E.

12' U.E.

12' U.E.

12' U.E.

12' U.E.

12' U.E.

12' U.E.

12' U.E.

12' U.E.

12' U.E.

12' U.E.

12' U.E.

12' U.E.

12' U.E.

12' U.E.

12' U.E.

12' U.E.

12' U.E.

12' U.E.

12' U.E.

12' U.E.

12' U.E.

12' U.E.

12' U.E.

12' U.E.

12' U.E.

12' U.E.

12' U.E.

12' U.E.

12' U.E.

12' U.E.

12' U.E.

12' U.E.

12' U.E.

12' U.E.

12' U.E.

12' U.E.

12' U.E.

12' U.E.

12' U.E.

12' U.E.

12' U.E.

12' U.E.

12' U.E.

12' U.E.

12' U.E.

12' U.E.

12' U.E.

12' U.E.

12' U.E.

12' U.E.

12' U.E.

12' U.E.

12' U.E.

T&Z = 871

VISTA CENTER OF PALM BEACH PLAT 3
SUBDIVISION * BEACH PLAT 3
BOOK 68 PAGE 130
FLOOD ZONE MAP # 150A
QUAD # 31
SE
DATE 2/21/17
SCALE 1"=40'

0473-001